

MONTHLY MEMBERSHIP PROGRESS REPORT

District 22 W

Results as of: 5/31/2026

GMT:

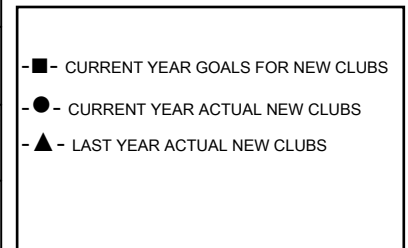
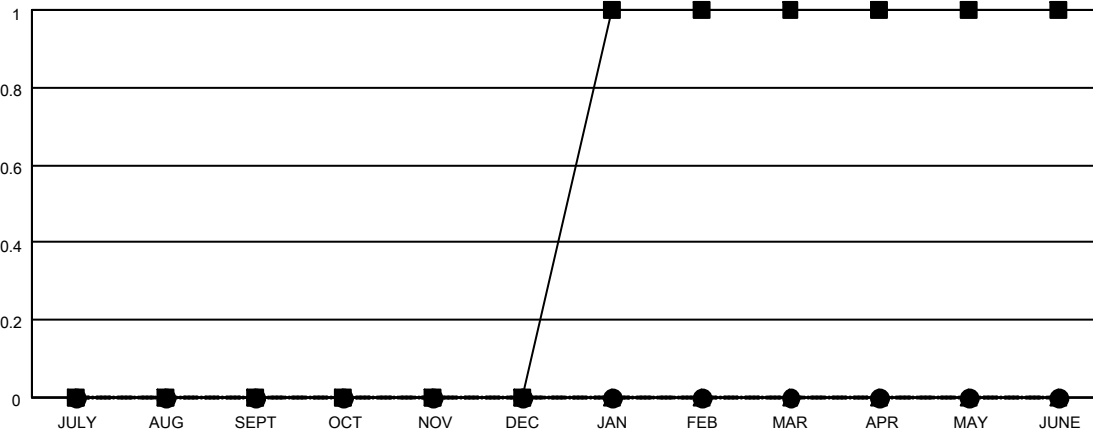
LOCATION MARYLAND

GMT CA

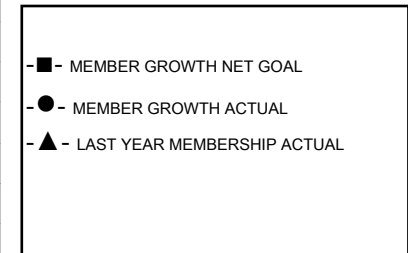
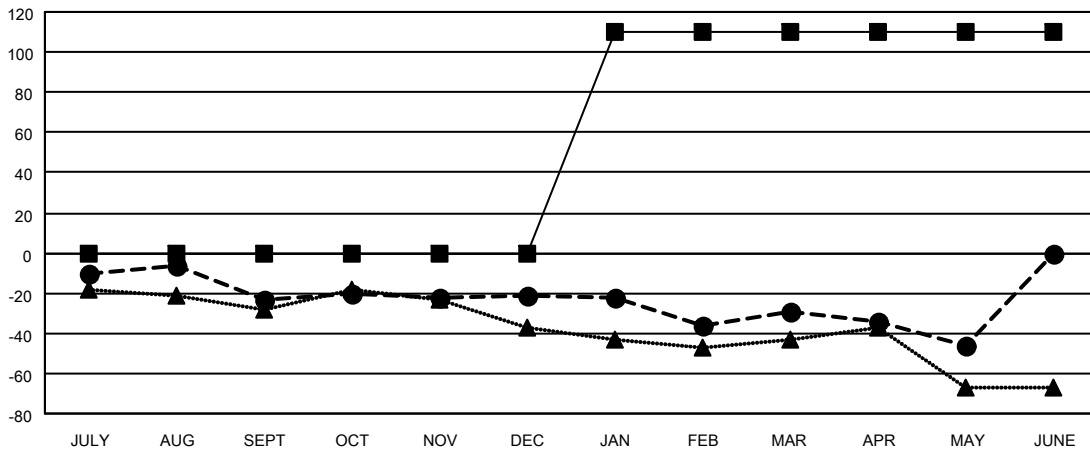
Clubs			
RESULTS FOR 2025-2026			
QUARTER	NEW CLUB GOAL	NEW CLUBS	DROPPED CLUBS
JULY/AUG/SEPT	0	0	0
OCT/NOV/DEC	0	0	1
JAN/FEB/MAR	1	0	0
APR/MAY/JUNE	0	0	1

Members			
RESULTS FOR 2025-2026			
QUARTER	MEMBER GROWTH NET GOAL	MEMBER GROWTH ACTUAL	DROPPED MEMBERS ACTUAL (including transfers)
JULY/AUG/SEPT	0	40	54
OCT/NOV/DEC	0	22	20
JAN/FEB/MAR	110	44	42
APR/MAY/JUNE	0	24	36

GOALS AND ACTUAL NEW CLUBS CUMULATIVE



GOALS AND ACTUAL MEMBERS CUMULATIVE



DROPPED CLUBS: 2	27 CLUBS OF 49 ADDED 1 OR MORE NEW MEMBERS	GENDER DISTRIBUTION MALE 906 (59.41%) FEMALE 619 (40.59%)
DROPPED MEMBERS DECEASED 30 CLUB CANCELLED 0 OTHER 121 TOTAL 151	CLICK HERE FOR CUMULATIVE MEMBERSHIP DATA	TOTAL FAMILY UNIT MEMBERS 394 FAMILY MEMBERS PAYING HALF DUES 211